

# REA-JET GK

The ultra-high resolution graphic coding and marking system for texts, logos and barcodes with print heights up to 100 mm



# High-Tech for the Industry

## REA-JET GK

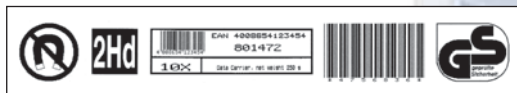
The ultra-high resolution large character ink jet printer for coding and marking on porous surfaces with a variable print height from 2 to 100 mm (4 inches).

Texts, barcodes and graphics, such as company logos or product images, can be printed in a vertical resolution of up to 256 pixels onto the packaging, effectively reducing costs as this solution provides for a flexible alternative to labels and pre-printed cardboard packaging.

Up to 42 text lines may simultaneously be printed with a single print head for the SKGK 768 and 21 lines for the SKGK 384 print head. Different barcode types and images may be freely combined. The solvent-free inks are particularly suitable for porous surface types and can even be used in the pharmaceutical and food industries where environmental concerns are a consideration.

High quality print results with product speeds of up to 200 m/min (650 ft/min). The combination of

Print Sample SKGK 384/128 (reduced scale)



Print Sample SKGK 768/256 (reduced scale)



the industrial environment-proven Piezo technology together with the robust system construction provides for high reliability even within the harshest and most rugged of industrial production environments.

The revolutionary new service module is a major breakthrough. The print heads equipped with this option are automatically cleaned, thereby reducing the maintenance efforts required to providing optimal system availability.

The REA-developed control software Print Commander provides for a comprehensive and user-friendly system operation.

The **REA-JET Print Commander** software incorporates all of the coding and marking functions with intuitive ease of use and is represented in a graphic user interface. Whether you wish to create or edit texts, control a REA printer via your computer network, select a print text or simply inform yourself about current print jobs which are in process, with the **REA-JET Print Commander** software all the functions are available in the popular standard Windows user interface.

The Windows environment makes operation simple and it is possible to utilize all the program features within a very short time.

## REA Elektronik GmbH

Teichwiesenstr. 1  
D-64367 Muehlthal  
E-Mail: [reainfo@rea.de](mailto:reainfo@rea.de)  
[www.rea.de](http://www.rea.de)  
Phone +49(0)61 54/6 38-0  
Fax +49(0)61 54/6 38-195

### Technical Data

Print Commander Software (Server/Edit/Control)  
- Operation by means of an industrial PC\* or an existing PC via local network  
- Windows based, menu operated user interface

Supported Printing Features  
- Controller with real time clock and variable calendar  
- Character orientation: normal, upside down, forwards, backwards  
- Variable distances between the characters and graphical elements of the printing text  
- Programmable counter  
- Logo function

Printable Barcodes  
- Code 39, 2 of 5 Int, 2 of 5 IntP, 2 of 5 IATA, 2 of 5 Std., ITF-14, UPC-E, UPC-A, EAN 8, EAN 13, Code 128, EAN 128

Ink Supply Unit  
- Ink supply unit provides for 125 ml and 500 ml ink cartridges  
- Special solvent-free inks  
- Interrupt-free ink cartridge replacement during printing process  
- Integrated cleaning system (Maintenance Module\*)

Print Heads  
- SKGK 768/256, print height: 2 - 100 mm, max. 256 pixel, up to 42 text lines (5x5 matrix)  
- SKGK 384/128, print height: 2 - 50 mm, max. 128 pixel, up to 21 text lines (5x5 matrix)

Connectivity  
- Ethernet 10/100 Mbit, RS 232/422 interface - serial  
- 4 digital PLC In / Outputs (additional 8, optional)  
- Alarm output

Print Gap  
- 0,5 - 4 mm

Power Supply  
- 85 - 265 V AC  
- 47 - 63 Hz

Operating Environment  
- Operating Temperature +10°C to +40°C (50° - 104°F)  
- Max. air humidity: 90% non-condensing

Dimensions  
- Controller with Ink Supply Unit (LxBxH): 260 x 110 x 150 mm (260 mm with container for maintenance module\*)  
- Print head SKGK 768/256 155 x 55 x 155 mm  
- Print head SKGK 384/128 125 x 50 x 100 mm  
- Power supply unit: 350 x 110 x 70 mm

Weights  
(Print head with Controller and Ink Supply Unit)  
- Print head SKGK 768/256: 4200 g  
- Print head SKGK 384/128: 3700 g  
- Power Supply Unit: 2200 g

\* = optional

Alterations reserved.

GK E 12/05/HMD/1000